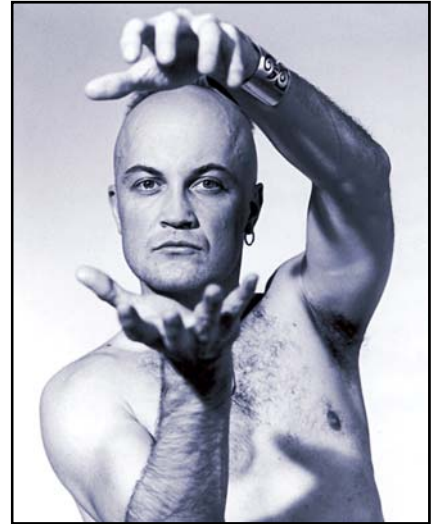


## ADAM THOMPSON

Adam Thompson from Shepparton has climbed to the top of one of the toughest industries in Australia – the music industry. With little family musical background and a local radio station that always erred on the conservative side, he created his own undeniable image and style with the very successful band “Chocolate Starfish”.

Adam came to Wanganui Park in 1975. Throughout this time his creative side blossomed. His love for expressions and performance guided his learning and although not actually pursuing a career in the Arts at that time it remained a passion.



During his time at Deakin University, where he studied Journalism and Media, he began singing and acting with the Geelong Repertory Society. It was then that he answered a newspaper advertisement asking for a singer and he joined with Sam Panetta who together wrote their first song on that very first day they met. This was the moment when Adam knew he was “hooked for life”. There was no looking back, they wanted to be rock stars and went on to form the band, ‘Show of Hands’.

It was a hard road to stardom, financing their journey to Melbourne themselves. He tried many different images and personas to try and create an image that would be successful. A cover version of the song by Carly Simon – “You’re So Vain” was a real hit and probably the start of a great musical career with Chocolate Starfish. Chocolate Starfish went on to have six top 40 singles, two top ten albums in the Australian charts, gold and platinum record sales, and claim an ARIA award for “Most Popular Album”.

Over the past eight years, since music has wound down for Adam, he has embarked on a new and challenging career in motivational speaking and inspirational development through song writing and music production. The program title MUSO Magic is designed for corporate or school groups wanting to uncover new ways of connecting with themselves and their colleagues or peers. This program truly inspires people.

Adam has recently released a new album titled “Reconnected”.